

FRONT RANGE WOODTURNERS

VOLUME 1 - NO 3

MARCH 2001



Lavonne Kaiser, of our club, gave the March demo. Her attention to detail sets her aside from many turners. The featured item she turned was a "pebble", a symmetrical turning resembling a flying saucer or sharp edged rock, with which most of us were not familiar. As she demonstrated, the key to this item was the symmetrical shape which she accomplished with templates and precision turning. As she described the item is a great item for smaller extra pieces of wood with a great feel. Hopefully she will bring some of her finished pebbles to the April meeting's show and tell for those who missed the demo. She also reviewed a unique baby toy (copies of the plan available in the library) which will be fun to make. Once again, thanks Lavonne for the extra time and effort it takes to contribute to the organization.

IMPORTANT NOTE:

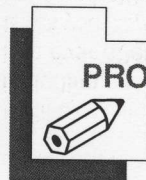
THE MAY MEETING DATE MAY CHANGE

The date for the demo by Gullio Marcolongo from Australia will probably necessitate the meeting be changed from the first Tuesday (May 1st) to the following Tuesday (May 8th) Exact details will be in the next news letter!

SUPER NEW MEETING SPACE

Another big thanks to Schlosser for their support and donation to our club. Our last

meeting was held in the front part of their building instead of the class room in the rear of the building. The new area just to the back of the showroom enables us to have the additional space necessary for our increased membership and visitors. They have also agreed to be open prior to the meeting for purchases and information. Your support with them is a small compensation for their support to us. In addition to many current good buys they are considering expanding their woodturning department. They have requested direction as to our specific areas of interests, primarily tools and accessories of course, they will consider any requests. Are you aware they have a used and reconditioned tool department. See Phil Link the Schlosser rep for details.



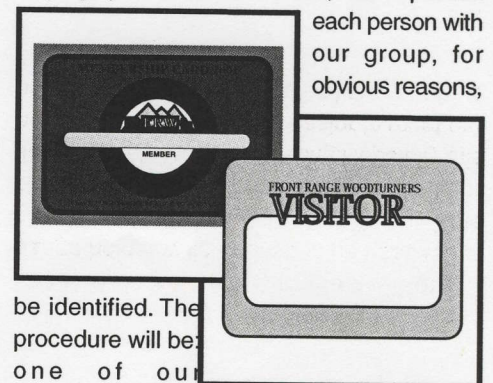
PROVO'S A COMMING!

If you have never been to Provo Utah for the annual "Utah Woodturning Symposium" to be held this year on June 7, 8, and 9th held at BYU (Brigham Young University), you haven't seen woodturning at it's best. This is an international event with 500 plus attending. I would urge any serious turner to try to fit this event into their time frame and budget. At \$220 plus expenses and 3 days (plus travel time), it may seem like a lot however, I have not spoken to anyone that has made the trip in the past that hasn't raved about the informative, educational and great fun time they had!

I will be willing to bet almost anything(not including my lathe) if you ask anyone who has ever attended, "was it one of the best times you have ever experienced, they would say... "what? are you kidding"...try asking and see their response. (Registration forms in the library...note price variances for students, spouses etc.)

NEW CLUB PROCEDURE

As of the April meeting we will have permanent **NAME TAGS**. For numerous reasons, at the next meeting you will need to get a name tag at the door. There are two types of tags..."Member" and "Visitor". Not only will this be helpful in helping all of us as to know who's who, but will enable everyone to greet our new visitors. With Schlosser's main store staying open after hours for us, it is important

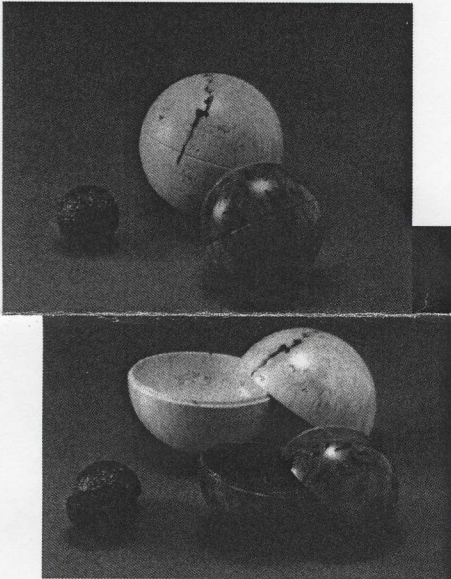


each person with our group, for obvious reasons,

be identified. The procedure will be one of our membership committee people will have the badges for each "member" and a "visitor" for each guest (with the name of the visitor to be printed on it). The badges should be clipped on during the meeting and left in the "badge box" when leaving. They will be realphabetized and available for the next meeting. This will help to not loose one's badge and necessitate the \$2.00 replacement fee (kidding of course...for now...however, they did cost the club a fair amount) You will also notice there is a "LIBRARY CARD" in the back of the badge holder which will soon be used when checking out items from the library. This change will not be implemented until a later time probably the May meeting. Hopefully this new program will make it easier to meet our newcomers and know each of our members better.

APRIL 3 MEETING DEMONSTRATION

The April demo will be performed by Curt Theobald. As pointed out in the last news letter Curt is the President of "Rocky Mountain Turners" the Fort Collins turning club. He will be sharing one of his specialties his unique "spherical boxes". The following biography are some thoughts from Curt:



"In 1992 I bought a vintage 1957 Shopsmith lathe for \$75.00. After scraping out a few walnut bowls, I discovered segmented turning. Clunky form, inconsistent wall thickness and plenty of sanding marks were common in my early turnings. It was at that point I became enthralled with trying to better my segmenting techniques and woodturning skills.

I joined the Denver chapter of AAW Front Range Woodturners in 1993. Shortly thereafter the AAW Symposium was held in Fort Collins, Colorado. I had no idea there were so many people interested in woodturning.

I soaked in as much knowledge as I could that weekend. It was at that instant gallery that I first saw the segmented work of the late Ray Allen. I tracked him down and asked him as much as my limited knowledge of segmented turning could come up with at that time. That began my passion to create more accurate segmented turnings and more pleasing shapes.

My segmented turnings begin with a full-scale drawing to use as a "blueprint." I often use colored pencils to shade in the different patterns so I can better see what I will learn that correct grain orientation, precise measurements, accurate sanding jigs, proper tool usage and quality sanding techniques are all vital to a good segmented turning.

I learned the hard way that grain orientation is critical for a segmented piece to stay together. I spent 80 hours

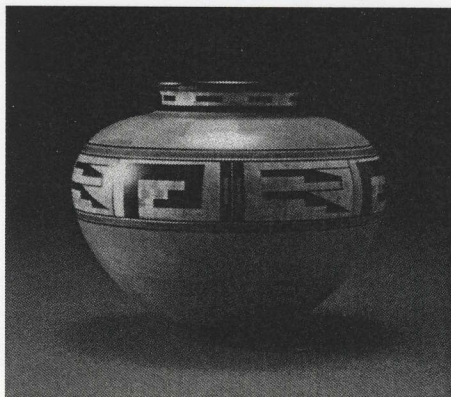
on a 16" platter only to have it come apart three months later when winter came and the humidity changed. The grain has to be running all the same direction so that when the wood moves, which it is guaranteed to do, it moves at the same ratio. Moisture content is also critical to minimize the wood's movement. I don't put a piece of wood in a turning unless it segmented turner, I use thousandths of an inch, not 1/16" or 1/32". The glue joints have to fit perfectly or a loose joint will occur. I use a machinist caliper with a dial indicator to make all my measurements. It is also easier to do the math on the segment widths using thousandths rather than fractional inches.

Accurate sanding jigs are important to a successful segmented turning. I go to great lengths to make my sanding jigs as accurate as I can. I check their accuracy with my machinist calipers and try to get them as close to perfect as I can. I may spend six hours adjusting one jig before I can use it confidently. The jig is used to sand ALL pieces that go into a turning, including the edges of the 1/28 of an inch veneer that I may use in my turnings. If the pieces don't fit perfectly, I don't glue them together. Glue will only magnify any open joint that you have. Some may say this is overkill, but I challenge them to find a loose joint in one of my turnings.

Proper tool usage is important to the success of a segmented turning. I use a 1/2 inch bowl gouge for most all of my turning, including using the gouge as a shear scraper to feather any ridges smooth. My goal is 1/8 inch wall thickness on my pieces with the bottom portion somewhat thicker for balance. Consistent wall thickness is crucial for a segmented turning so there is equal seasonal movement within the wood. Inconsistent wall thickness will create a weak spot or stress point, potentially resulting in a crack somewhere in the turning.

Quality sanding is very important to a successful piece. The first step to quality sanding begins with proper tool usage, then going through the grits of sandpaper, being careful to not overheat the turning as this could cause the glue to delaminate or the wood to heat check. I sand my pieces up to 1200 grit inside and out. The first key to a good finish is quality sanding. Nothing ruins an otherwise good turning quicker than sanding scratches.

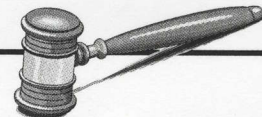
Each piece I turn and every "blueprint" I



make are learning experiences and provide me with a sense of accomplishment as I see the finished piece take shape.

Segmented turning has been my passion for the past few years. It is my driving challenge to see a well-designed piece of Southwestern clay pottery come to life with various woods accurately glued together then sculpted on the lathe.

When I am not working on a segmented turning, I relax by turning spherical boxes ranging in size from 1 to 5 inches. I like to use close grained woods like Bloodwood or African Blackwood, they turn better, but I have used Boxelder as well as other softer woods."



NOTES FROM THE PRESIDENT:

I hope each of you was as pleased as I was regarding our new spacious meeting area at Schlosser's at the March meeting.

We are continuing to refine and revise our procedures regarding the use of the new facility to the best advantage of all concerned. I would encourage any of you who desire to shop or just browse in the retail area of Schlosser's to arrive early and do so between 5 and 7 pm when the meeting starts. Schlosser's is currently pursuing major additions to their woodturning supplies, tools, and equipment and they are actively seeking input from each woodturner regarding your needs and interests.

Front Range Woodturners will be making every effort to conclude our meetings and demonstrations no later than 9:30 pm. Every effort is being made to hold the business and announcements portion of the meeting to 15 minutes or less. Show and Tell will be next, followed immediately with the wood raffle which shouldn't take long. A 10-15 minute break will follow for you to get a soft drink, refill your coffee cup, check out the library, complete your shopping with Schlosser's, or just chew the fat with your neighbor.

Every demonstrator should be entitled to at least 1 1/2 hr demonstration and discussion time which means we should be reconvened and ready no later than 8 pm (earlier if possible). Your assistance and cooperation will be greatly appreciated. Thank you all for the help with the chairs, clean up and assisting the demonstrator pack up and carry out.

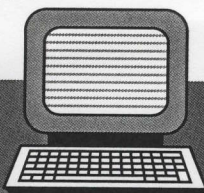
Thanks for coming,

Jerry

P.S. We hope to have sufficient chairs for the April meeting for everyone to be seated and comfortable so that no one has to stand for the demonstration.

SPECIAL THANKS...

A special thanks to those who participated in the Channel Six Art Auction donations. Gene Wentworth took the ball from Pete Holtus and ran it for a touchdown. As most of you know this has been a strong project of Pete's over the last few years. However, residing as president of our club, demonstrating, teaching, scouting and...I almost forgot, a full job of working, he welcomed the endeavor from Gene to follow up and complete our involvement this year. The contributors this year were Gene Wentworth, Pete Holtus, Phil Houlik, Chuck Kubin, John Montague and Paul Stafford with a total of thirteen items donor valued at \$2060.00. This representation resulted in our club having a "table" which means our organization receives publicity as to our purpose and goals as well as acknowledgement of the particular artists and their donated items. Thanks again to all involved and particularly Gene for his extra time and effort.



THE INTERNET

Rocky Mountain Woodturners, (FtCollins)
web site, Nancy Quick-Brewer
<http://www.verinet.com/~drmeli/rmwet.html>

Other sites of interest to check out:

www.lathes.co.uk
www.woodworkingbasics.com
www.treelineusa.com
www.woodturnerscatalog.com
[www.Kestrel Creek Gallery](http://www.KestrelCreekGallery.com)
[www.Choice Woods.com](http://www.ChoiceWoods.com)



NEWS FROM THE LIBRARY

New items should be arriving by the next meeting. We are replacing the items which have been lost or never returned. This has been a expensive upgrade to our library. Your cooperation with regard to returning items when they are due (the following meeting) will help in maintaining a first class library. **Help is needed** for someone to edit some of our own tapes. Many of our earlier recorded tapes of demonstrations need to be edited reviewed and edited. If you have any interest in this project contact the librarian.

Once again, items for sale etc. will be included for 3 issues (or unless notified earlier) To assure accuracy and timeliness, items should be sent to: John Montague 7017 S. Davies Street, Littleton, Co 80120or E-mailed to JAMONT312@aol.com no later than two weeks following the regular meeting. PLEASE let me know if the item is sold or bought prior to the 3rd mo so it may be removed. You might consider donating unsold items to the club.

For Sale: Delta Model 46-701 12" variable speed lathe with stand. Cost \$550 new in 1997. \$225.00 or best offer. Some extras available. Ron Bentall 303-322-8272 evenings before 9:30PM.

For Sale: Bowl Lathe: Large N.D.no tailstk.Call Dick @ 303/841-1198

For Sale: Klingspor Velcro-backed 2" disks. also, Eagle brand Velcro backed disks. These come in 320 grit only. Pen Supplies 2- acrylic pen display stands, CSUA part # 034-0700, 2- pen storage cases, CSUA #050-8300 & # 050-8480 (or similar). Several pen boxes like CSUA #s 050-3203, 3401, 3201, 3601, etc. Velvet pen sleeves from Woodcraft, some pen blanks, etc. Will trade for wood (burls, Russian olive, fízlit woods, interesting pieces, exotics,) or make an offer! See Cindy Drozda at the meetings or contact her @ 303/449-7170, or email her at cdrozda@nyx.net

For Sale: Deep hollowing tools. Hagner duplicator attachment model LKH 950. This is a rear mount which allows you to copy a pattern and do regular turning without removing the duplicator \$1500.00, original cost approx \$3000.00. 10 inch Craftsman radial arm saw on stand \$125.00. Also some stainless steel carts with casters approx 24 x 36 and 36 high, \$30.00 each. Dick Breckon @ 719-597-9718 evenings or weekends are best.

For Sale: Jet JWL-1236 wood turning lathe. 3/4 horsepower motor, 12 " swing over the bed, 16" outboard capacity, 34 1/2" between centers, ball bearing live center and 4 prong drive center. Other extras including steel stand. Selling all for \$450. Contact Allen Jensen @ 970-663-1868.

For Sale:Power Matic Lathe 45 Call George Adams @303-452-5650 **REDUCED TO \$600**

For Sale: Delta 10" table saw, newer model 34-760, Used very little, has a dust collector chute underneath \$240.00 call Wayne Van Every 970-378-8815.

Sale: Mark V ShopSmith Model 510 lathe, parts & access, faceplate, drive ctr,tail stock ctr, 1/2" & 3/8" gouges, skew, parting tool. 4" jointer, jig saw, 1/2" drill chuck, miter guage, biscuit jointer & guards, 5/8" molder/dado arbor & bits. Mortising & tennon chisrl & guards, 10" sanding disc, 10" carbide saw blade & all guards & instruction manuals. Call Louis Zutman (303)451-1626

For Sale:5 universal aluminum clamps with mounting brackets, no scuff, and miter options; Wilton woodworkers vise - like new; Zyliss aluminum vise with soft jaws and extension jaw; Original mor-ten jig - for making mortise and tenons with a router; *all serious offers considered* Call Les Stern 303-744-2159

Wanted: Used Stewart System and or parts. Call Chuck Kubin @ 303-733-0254

Wanted: Two or three sections of locust branches, about 4 inches in diameter, and one or two sections suitable for bowls. Contact Dave Kahne @307-745-9352 or e-mail at dskwyo@fiberpipe.net



If you have received the last three news letters and have not joined the club... (paid yours dues and become a member)...this will probably be your last news letter.

MENTOR PROGRAM & SHOP TOURS

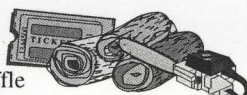
Phil Houck is coordinating and arranging some "shop tours" and mentor programs. A number of you interested in participating in an activity have a signed up. Phil will be contacting you for the final arrangements. The sign up sheet will still be in the library for anyone else interested. See Phil at the meeting or call him at 303-985-4692.



DON'T FORGET!...

WOOD

...for the raffle



Items for...

SHOW & TELL



TO PAY

\$ YOUR DUES